

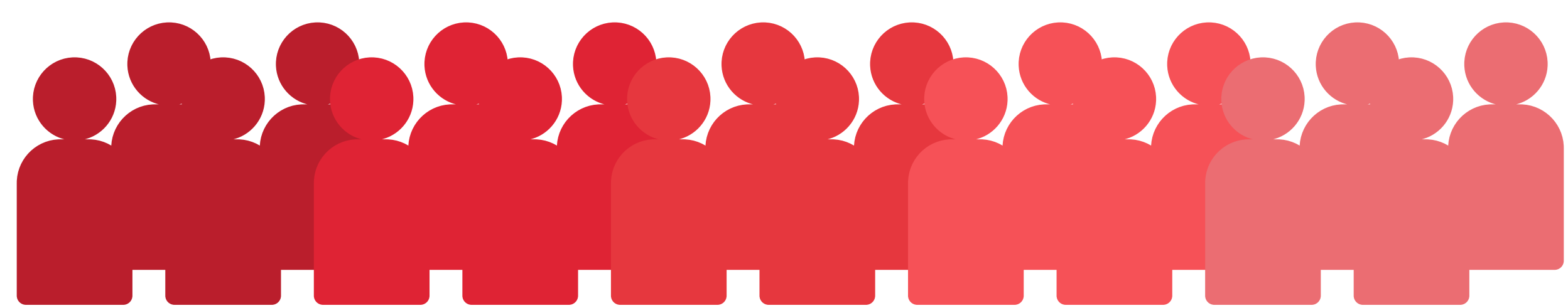
# YLA Young Leaders of the Americas Initiative

Since its launch in **2015**, the U.S. Department of State's Young Leaders of the Americas Initiative (YLA) Fellowship Program empowers emerging entrepreneurs from the Western Hemisphere to enable the full economic potential of the region's citizens. YLA promotes U.S. business models, increases trade, encourages job creation, and builds lasting and sustainable networks of young entrepreneurs and business and social leaders across **Latin America, the Caribbean, Canada, and the United States**.

CELEBRATING

**1,504**

YLA FELLOWS



**50% WOMEN**

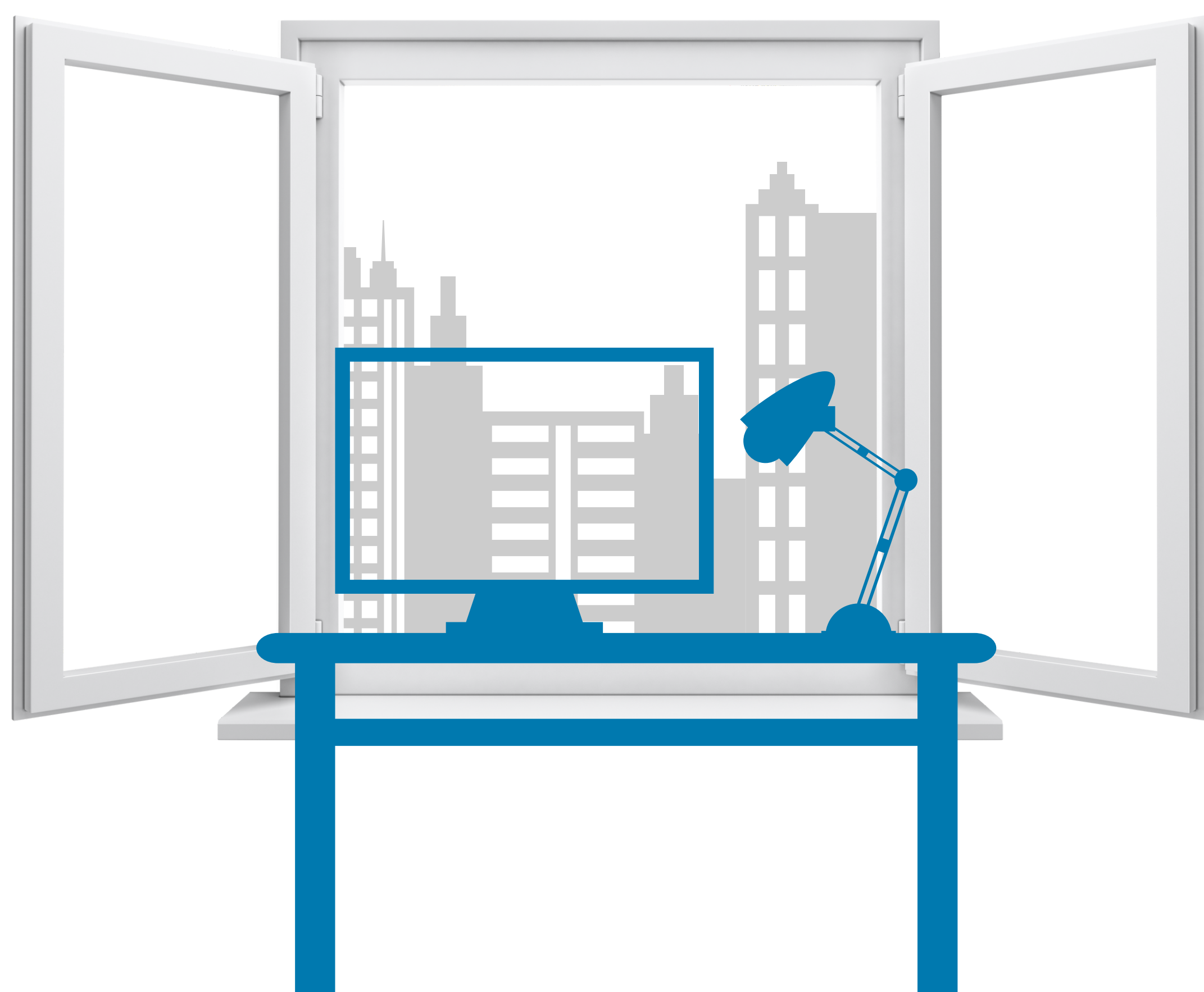
AND **55,000+**

YLA NETWORK MEMBERS

WITH ACCESS TO **25 ONLINE COURSES**,  
**100+ INSTRUCTIONAL VIDEOS**, AND  
**400+ INFORMATIONAL BLOG POSTS**

FROM  
**37** COUNTRIES

YLA HAS CONNECTED PROFESSIONAL FELLOWS WITH  
**1,100+ U.S. FELLOWSHIP PLACEMENT** BUSINESSES AND  
ORGANIZATIONS ACROSS **85 CITIES** AND **34 STATES**



THE YLA FELLOWSHIP HAS AWARDED

**156**

OUTBOUND  
EXCHANGE  
GRANTS

**179**

IMPACT AND  
INNOVATION  
GRANTS

**187**

PROFESSIONAL  
DEVELOPMENT  
GRANTS

TO FOSTER **COLLABORATION** AND **CAPACITY**  
BUILDING BETWEEN **U.S. PARTNER** AND  
ALUMNI NETWORKS AND ALUMNI LOCAL  
**ENTREPRENEURIAL COMMUNITIES**

A YEAR AFTER  
RETURNING  
FROM THEIR  
**YLA**  
FELLOWSHIPS

**81%**

HAVE USED  
SKILLS LEARNED  
THROUGH THEIR  
FPOS IN THEIR  
ORGANIZATIONS

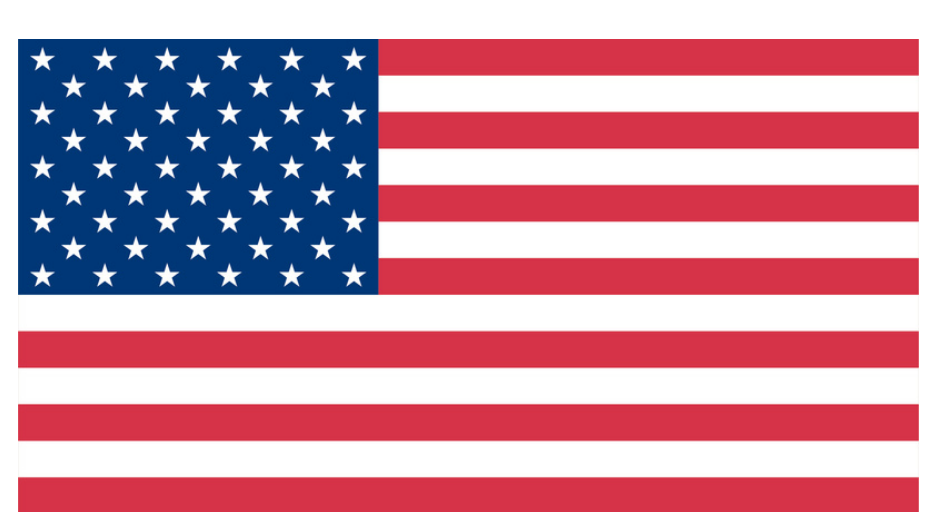
**84%**

FEEL  
CONFIDENT  
IN THEIR  
LEADERSHIP  
STYLE

**92%**

FELLOWSHIP  
PLACEMENT  
ORGANIZATIONS  
WOULD HOST  
AGAIN

OVERALL, **ALUMNI** ARE A PART OF AN  
**ACTIVE NETWORK** SUPPORTED BY U.S.  
EMBASSIES AND CONSULATES

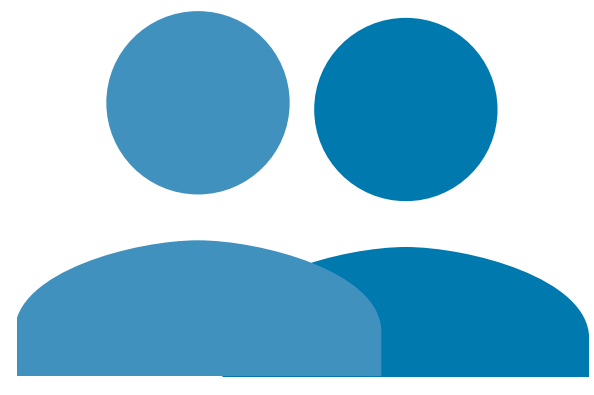


Learn more and join the  
YLA Network at  
[ylai.state.gov](http://ylai.state.gov)





## THE THREE PILLARS OF YLA



**The YLA Fellowship Program** is an annual exchange program for 280 young business and social entrepreneurs from 37 countries across Latin America, the Caribbean, and Canada, who are matched with businesses and organizations across the United States. In addition to entrepreneurial leadership training, fellows build new skills, share best practices, and forge commercial ties. YLA alumni also have access to Outbound Exchanges, small grants, resources and events, as well as to exclusive opportunities offered by the U.S. Department of State on [alumni.state.gov](https://alumni.state.gov).



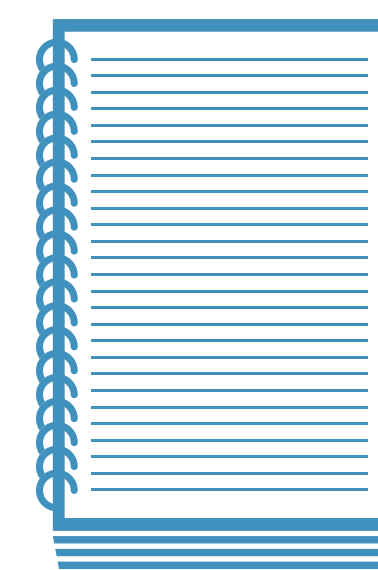
**The YLA Network** is a virtual community of 55,000+ entrepreneurship-minded members from across the Americas. Network members engage with curated leadership and business development resources that highlight innovative U.S. models, policy-focused campaigns, and networking opportunities.



**U.S. Embassies and Consulates** organize activities with YLA professional fellows, network members, and diverse young leaders to support entrepreneurial ecosystems. YLA fellows and network members are key partners for engaging with and inspiring young people across the hemisphere.

"I feel like my mentor is a walking book of solutions. I am extremely satisfied with my mentor, she has given me some great ideas and helped me manage my time. I couldn't have asked for better!"

- 2021 Fellow, St. Maarten



"[THIS EXPERIENCE] WAS FANTASTIC! IT HELPED ME BETTER UNDERSTAND THE CHALLENGES AND OPPORTUNITIES IN OTHER COUNTRIES."

- 2018 PARTNER, DALLAS



"This incredible 6 week experience has given me invaluable knowledge, immense personal growth, and support systems to last me a lifetime."

- 2023 Fellow, Jamaica



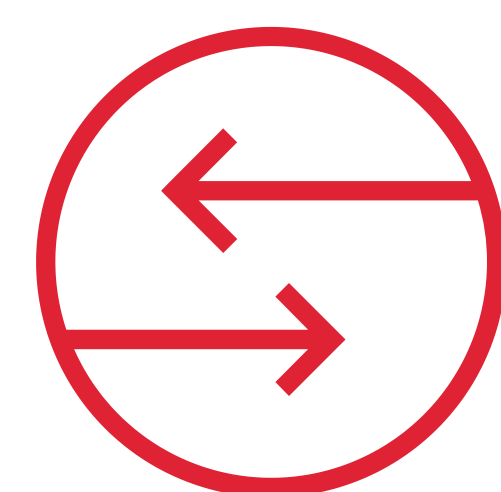
"YLA brought me friends, business partners, clients, and a family. It changed my life."

- 2016 Fellow, Brazil



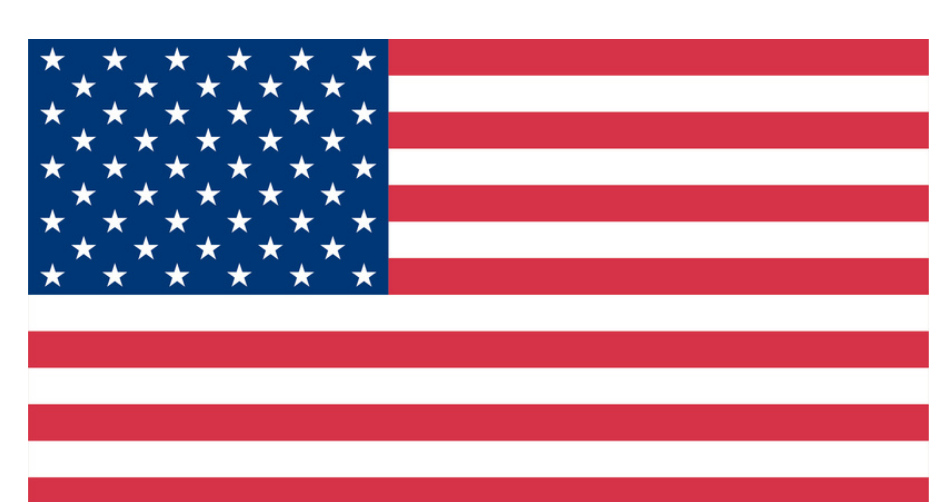
"It was so exhilarating to support [fellows] along their journeys towards local, national and global impact."

- 2023 Partner, San Diego



"WHAT AN HONOR AND A BLESSING TO HAVE BEEN A PART OF YLA! [THIS WAS] AN INCREDIBLE EXPERIENCE. WE ENJOYED EVERYTHING ABOUT THIS PROGRAM."

- 2023 PARTNER, KANSAS CITY



Learn more and join the  
YLA Network at  
[ylai.state.gov](https://ylai.state.gov)

